



Medium Chess Puzzle # 0071

By

G Bud Games
<https://gbud.in>

November 13, 2021

Contents

Medium Chess puzzle # 0071 - Mate in 2 moves	3
Medium chess puzzle 0071	3
Solution to medium chess puzzle 0071	4
Solution 1	4
Right moves for the solution to the medium chess puzzle 0071	6
Explanation for the moves	7
Categories of medium chess puzzle 0071	7
How to view the solution to medium chess puzzle 0071	7
How to get help for moves in the medium chess puzzle 0071	8
Play chess for free	10

List of Figures

1	Solve this medium chess puzzle 0071. Mate in 2 moves @ https://gbud.in/g8lwvj2	3
2	Solve this medium chess puzzle online with solution @ https://gbud.in/g8lwvj2	3
3	Initial board position of medium chess puzzle 0071	4
4	Rxe4 - Opponent's rook captures your hanging knight and pins your bishop to your king. It is materially advantage for them. But it is a mistake	5
5	Qc1+ - Queen moves to c1 and gives a check. Had the opponent's rook been in e1, this move would not be possible.	5
6	Re1 - Opponent's rook comes back to block the check threat. But it can not stop the checkmate	6
7	Qxe1# - Queen captures opponent's rook and checkmate. This is a back-rank mate	6
8	Click the solution button to view solutions @ https://gbud.in/g8lwvj2	8
9	Click the help button to get help on next move @ https://gbud.in/g8lwvj2	9
10	Solve more medium puzzles @ https://gbud.in/chsmdpz	9
11	Solve other puzzles @ https://gbud.in/chsgppz	9
12	Play chess online for free. Solve puzzles and play with friends	10
13	Solve this puzzle online by scanning this QR code or go to the link below	11

Medium Chess puzzle # 0071 - Mate in 2 moves

Solve this medium chess puzzle and improve your chess games through improvement of your chess strategies and chess tactics.

Puzzle No : 0071

Difficulty level : medium

Description : Mate in 2 moves

Next Move : Black

Player level : Intermediate

Short URL for puzzle : <https://gbud.in/g8lwvj2>

Medium chess puzzle 0071

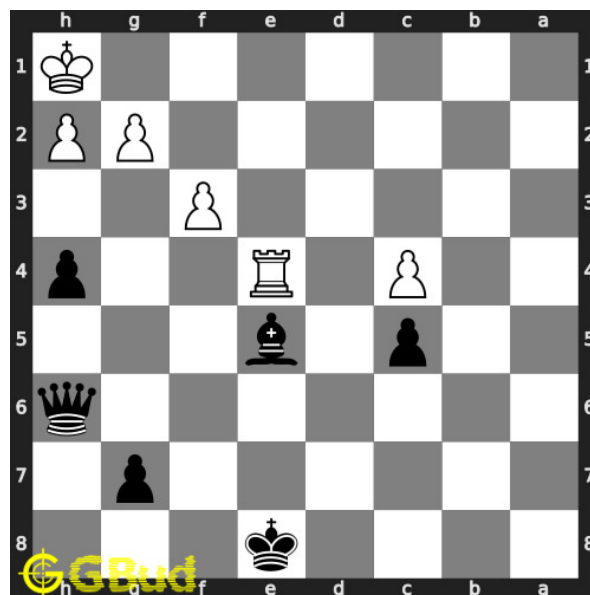


Figure 1: Solve this medium chess puzzle 0071. Mate in 2 moves @ <https://gbud.in/g8lwvj2>



Figure 2: Solve this medium chess puzzle online with solution @ <https://gbud.in/g8lwvj2>

Solution to medium chess puzzle 0071

At this puzzle, next [move](#) is by [Black](#). The objective of the puzzle is to mate in 2 moves.

See the interactive solution at the [puzzle page](#)

Solution 1

Initial board position This is the initial board position of medium chess puzzle 0071.

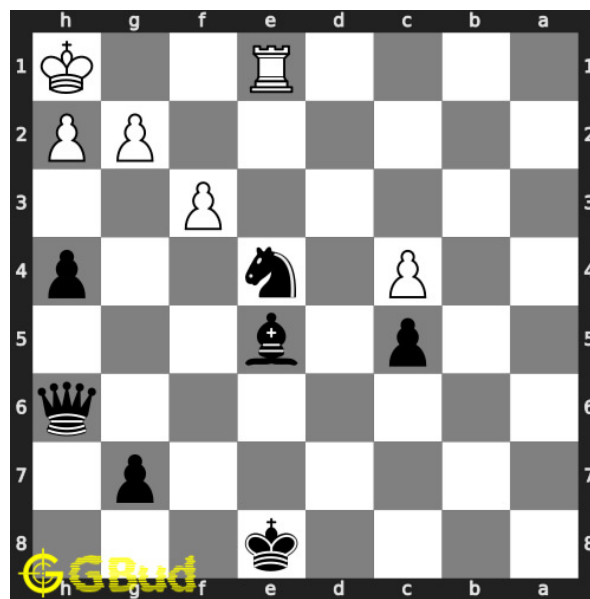


Figure 3: Initial board position of medium chess puzzle 0071

Move 1 Move by white

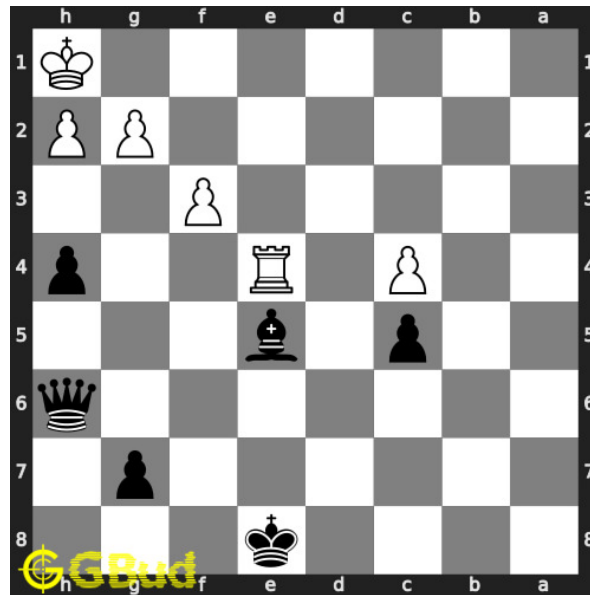


Figure 4: Rxe4 - Opponent's rook captures your hanging knight and pins your bishop to your king. It is materially advantage for them. But it is a mistake

Move 2 Move by black

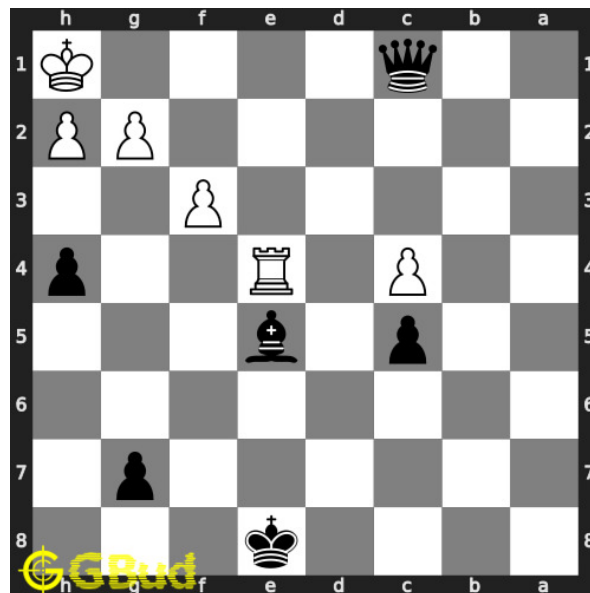


Figure 5: Qc1+ - Queen moves to c1 and gives a check. Had the opponent's rook been in e1, this move would not be possible.

Move 3 Move by white

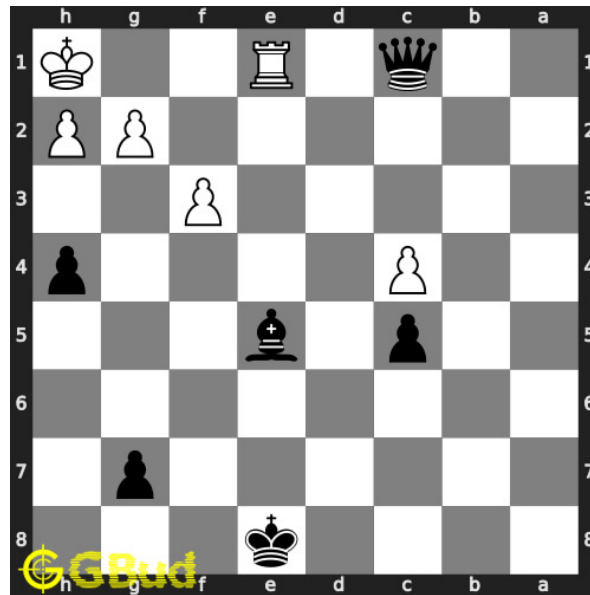


Figure 6: Re1 - Opponent's rook comes back to block the check threat. But it can not stop the checkmate

Move 4 Move by black

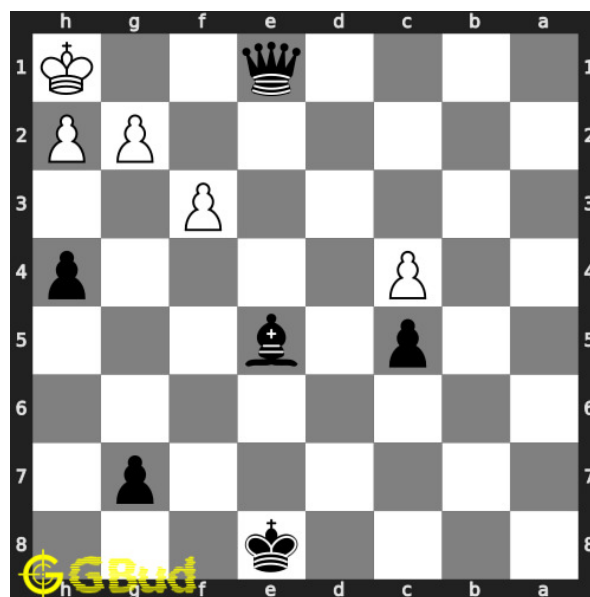


Figure 7: Qxe1# - Queen captures opponent's rook and checkmate. This is a back-rank mate

Right moves for the solution to the medium chess puzzle 0071

Based on the objective of the puzzle, you have to make the right moves. Following are the right moves

1. Qc1+, Qxe1#

Explanation for the moves

1. Rxe4 - Opponent's rook captures your hanging knight and pins your bishop to your king. It is materially advantage for them. But it is a mistake
2. Re1 - Opponent's rook comes back to block the check threat. But it can not stop the checkmate
3. Qc1+ - Queen moves to c1 and gives a check. Had the opponent's rook been in e1, this move would not be possible.
4. Qxe1# - Queen captures opponent's rook and checkmate. This is a back-rank mate
5. For right move - You did not bother losing your pieces since you knew that you will win. You made the right choice
6. For wrong move - You could have had a back-rank mate in 2 moves. You missed it. Try again

Categories of medium chess puzzle 0071

This medium chess puzzle falls in these categories.

1. [Medium chess puzzles](#)
2. [Sacrifice puzzles in chess](#)
3. [Mate in 2 puzzles in chess](#)
4. [Endgame puzzles in chess](#)
5. [Strategy puzzles in chess](#)
6. [Mate pattern puzzles in chess](#)
7. [Pin puzzles in chess](#)
8. [Queen puzzles in chess](#)

How to view the solution to medium chess puzzle 0071

To view the [solution to this puzzle](#), follow the steps given below

1. Go to the [puzzle page](#)
2. Click the solution button (Key as shown [below](#)) to view the solution

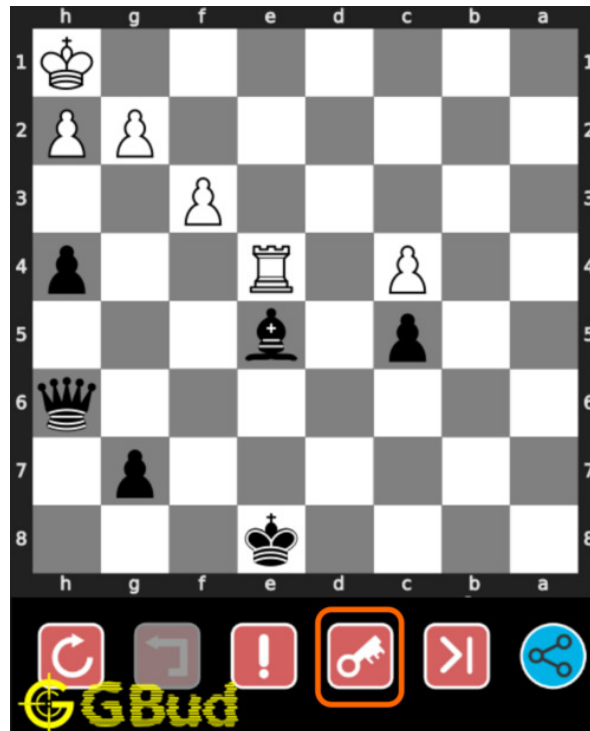


Figure 8: Click the solution button to view solutions @ <https://gbud.in/g8lwtvj2>

How to get help for moves in the medium chess puzzle 0071

To get help or the possible next moves in the puzzle, , follow the steps given below

1. Go to the [puzzle page](#)
2. Click the help button (exclamation mark as shown [below](#)) to get help or suggestion on next possible [move](#)

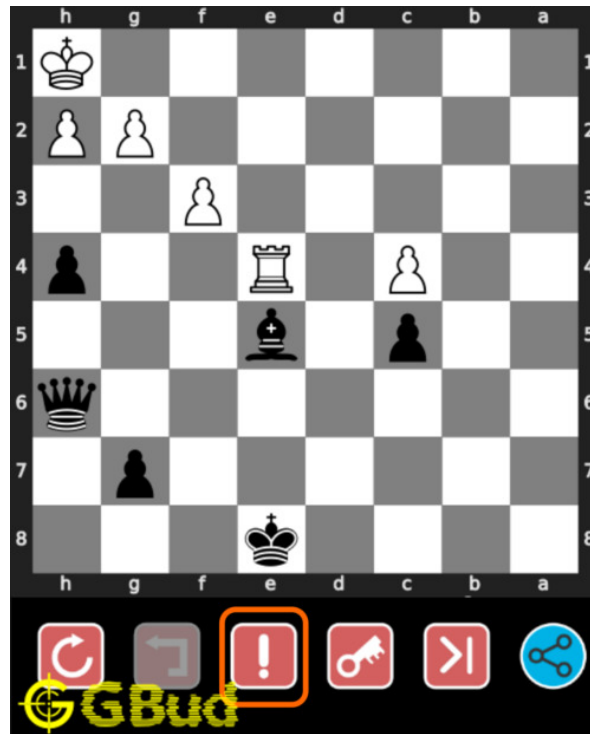


Figure 9: Click the help button to get help on next move @ <https://gbud.in/g8lwvj2>



Figure 10: Solve more medium puzzles @ <https://gbud.in/chsmdpz>



Figure 11: Solve other puzzles @ <https://gbud.in/chsgppz>

Play chess for free

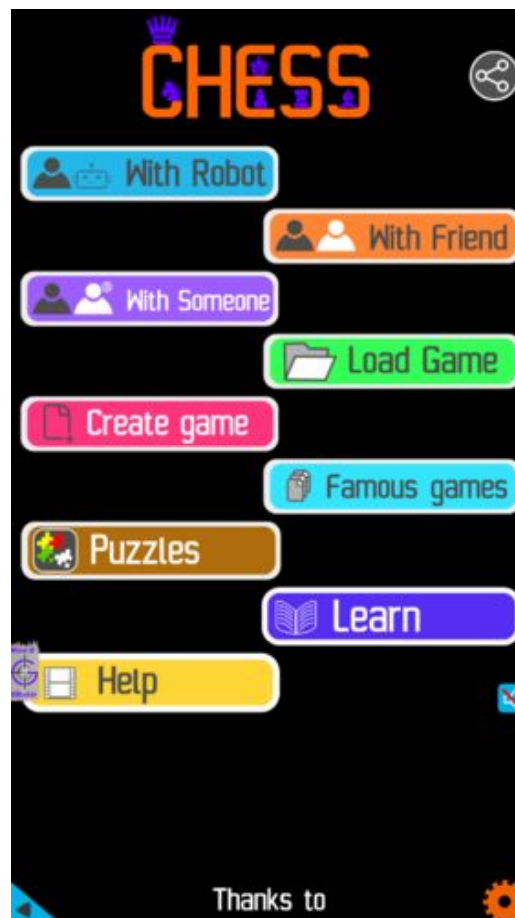


Figure 12: Play chess online for free. Solve puzzles and play with friends

Play chess for free at <https://gbud.in/chs>

We present you a platform to play chess online with friends for free. No need to install any app. You can play chess for free without registration or login.

Simple. You can do several chess related activities.

1. [solve chess puzzles](#)
2. [learn about chess](#)
3. [play chess with computer](#)
4. [play chess with friend](#)
5. [create your own chess games](#)
6. [fen viewer](#)
7. [fen editor](#)
8. [fen generator](#)
9. [pgn viewer](#)
10. [chess board editor](#)

11. [view famous chess games.](#)



Figure 13: Solve this puzzle online by scanning this QR code or go to the link below

<https://gbud.in/g8lwvj2>

Read the latest article on Medium Chess puzzle # 0071 - Mate in 2 moves by scanning this QR code or click the link

Previous article : [« Medium Chess puzzle # 0070 - Mate in 2 moves](#)

Next article : [Medium chess puzzles »](#)

[Back to top](#)

[Contact Us](#)

© GBud Games 2021